

## Laporan Mingguan (Maret 08 – 12)

### Summary:

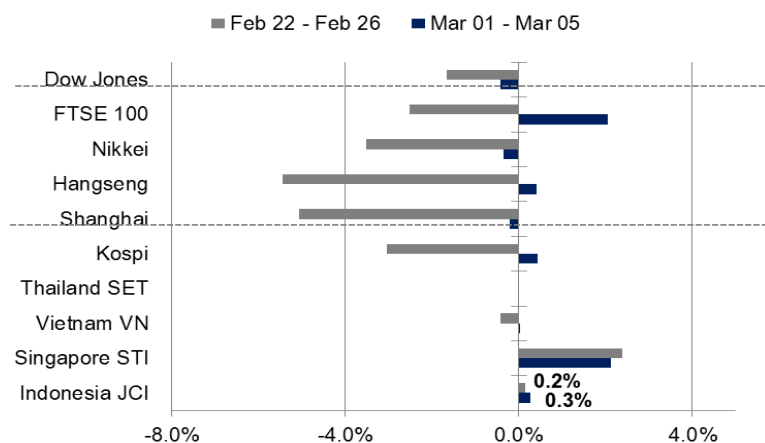
**Last week review:** IHSG masih bertahan dan ditutup di zona hijau selama sepekan lalu. Laju pergerakannya mayoritas dipengaruhi oleh sentimen dari domestik yaitu rilisnya data inflasi yang tercatat sebesar 1,38% YoY dan cadangan devisa yang tercatat surplus sebesar USD138,8 miliar. Sementara itu, pemerintah juga memberikan stimulus berupa relaksasi pajak penjualan atas barang mewah (PPnBM) untuk sektor otomotif.

**This week's outlook:** Pergerakan IHSG pekan ini cenderung akan sepi dari sentimen rilis data ekonomi, dengan hanya rilis Indeks Keyakinan Konsumen (IKK) yang dijadwalkan. Pelaku pasar akan mencermati pergerakan nilai tukar USD/IDR yang tengah mengalami tekanan hingga menyentuh level Rp 14.300/USD. Selain itu, sentimen imbal hasil Obligasi 10-tahun yang meningkat juga masih akan membayangi bursa saham.

JCI Index	: 6,258.74 (+0.3%)
Foreign Flow	: Net Sell of IDR356 billion (vs. last week's net buy of IDR1.1 trillion)
USD/IDR	: 14,300 (-0.46%)

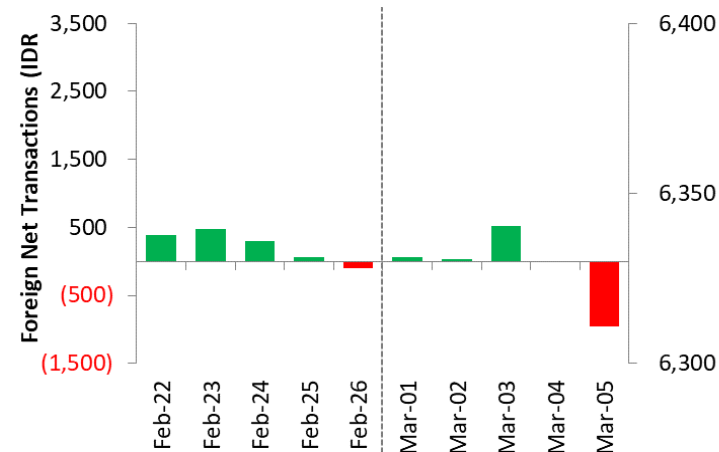
# Last Week's JCI Movement

## Global Market Movement



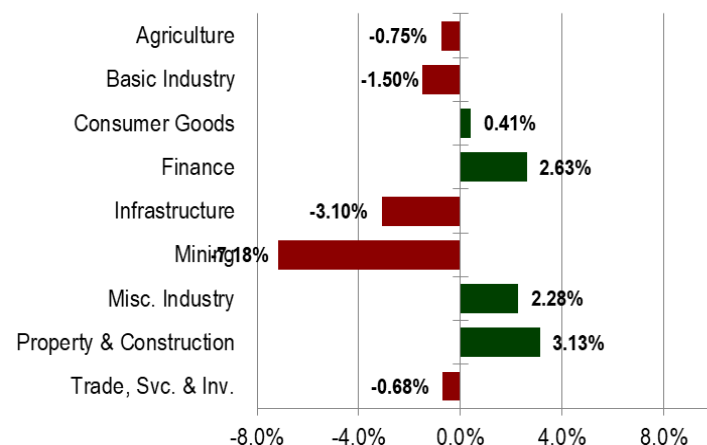
Source: Bloomberg, NHKSI Research

## Foreign Net Flow – Last 10 Days



Source: Bloomberg, NHKSI Research

## JCI Sector Movement



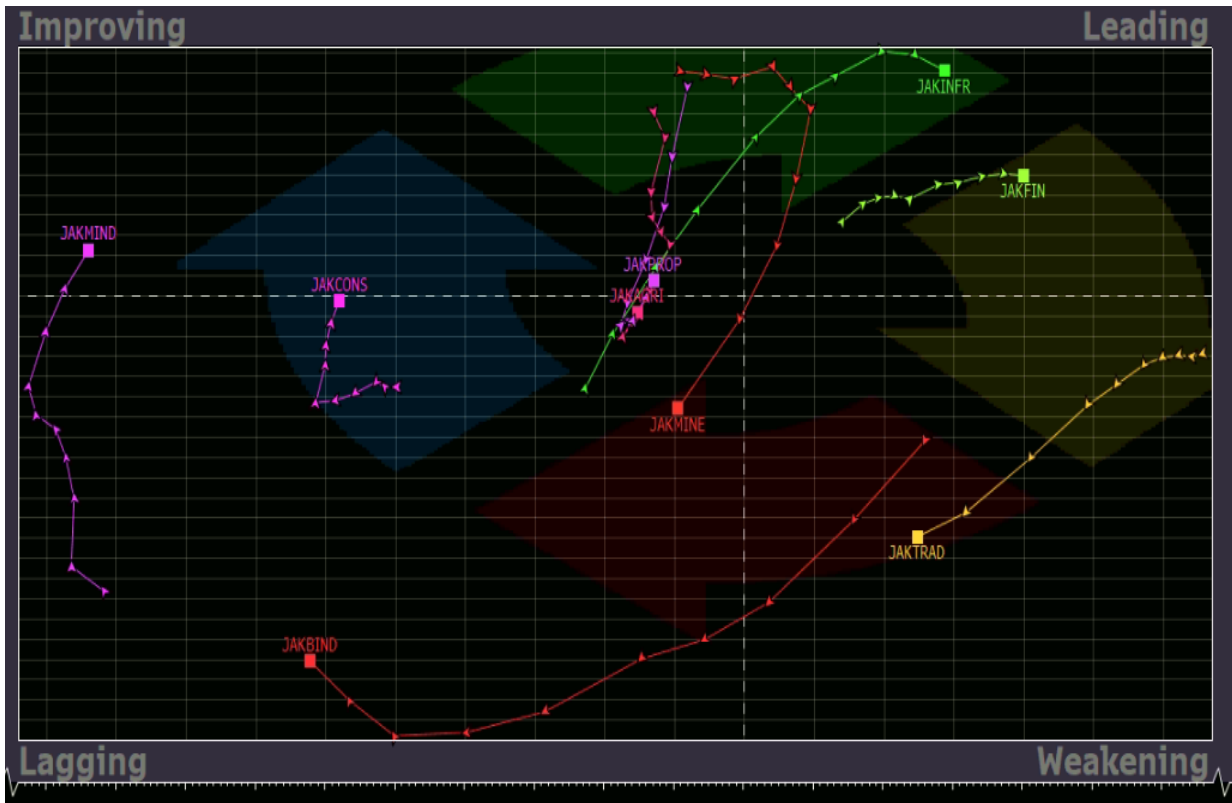
Source: Bloomberg, NHKSI Research

## JCI's Top Foreign Transaction

Top Buy (RG)	NB Val.	Top Sell (RG)	NS Val.
BBCA	740,587	ASII	-303,947
BBRI	256,878	ICBP	-143,869
BMRI	213,727	GGRM	-133,590
KLBF	128,002	ADRO	-120,478
BBTN	89,967	CTRA	-105,517

Source: Bloomberg, NHKSI Research

# Stock Recommendation



- 1. Sector : Finance  
Top Picks : BMRI (TP: 6800; SL: 6425)
- 2. Sector : Agriculture  
Top Picks : AALI (TP: 11650; SL: 10700)
- 3. Sector : Property  
Top Picks : ADHI (TP: 1525; SL: 1300)

Source: Bloomberg, NHKSI Research

# JCI Index

Support

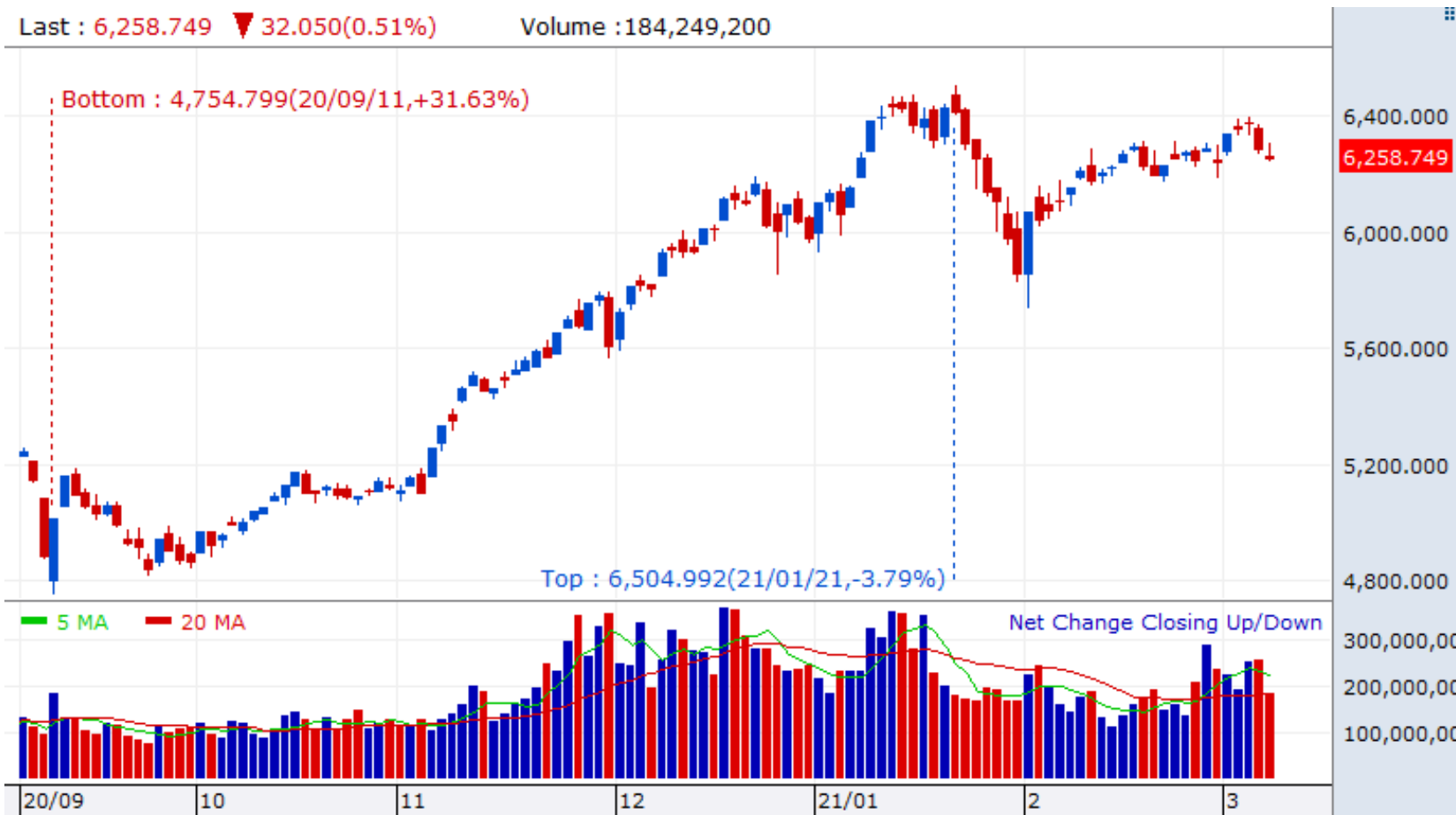
6185

Resistance

6326

Last : 6,258.749 ▼ 32.050(0.51%)

Volume : 184,249,200



Source: NHKSI Research, Bloomberg

# Economic Calendar

Date	Country	Hour JKT	Event	Period	Consensus	Previous
<b>Monday, 08-Mar</b>	ID		Consumer Confidence Index	Feb	--	84.9
	GE	14:00	Industrial Production SA MoM	Jan	-1.50%	0.00%
	US	22:00	Wholesale Inventories MoM	Jan	--	1.30%
<b>Tuesday, 09-Mar</b>	EC	17:00	GDP SA QoQ	4Q20	-0.60%	-0.60%
	EC	17:00	GDP SA YoY	4Q20	-5.00%	-5.00%
<b>Wednesday, 10-Mar</b>	CH	08:30	CPI YoY	Feb	-0.30%	-0.30%
	CH	08:30	PPI YoY	Feb	1.40%	0.30%
	US	19:30	MBA Mortgage Applications	Mar	--	0.50%
	US	20:30	CPI MoM	Feb	0.40%	0.30%
<b>Thursday, 11-Mar</b>	EC	19:45	ECB Deposit Facility Rate	Mar	-0.50%	-0.50%
	US	20:30	Initial Jobless Claims	Mar	--	745k
<b>Friday, 12-Mar</b>	UK	14:00	Industrial Production MoM	Jan	--	0.20%
	UK	14:00	Manufacturing Production MoM	Jan	--	0.30%
	GE	14:00	CPI YoY	Feb	--	1.30%
	US	20:30	PPI Final Demand MoM	Feb	0.40%	1.30%

Source: Bloomberg, NHKSI Research

# Corporate Action Calendar

Date	Event	Company
<b>Monday, 08-Mar</b>	IPO RUPS Right Issue	UNIQ ARNA MAYA
<b>Tuesday, 09-Mar</b>	RUPS	TBIG; IBST
<b>Wednesday, 10-Mar</b>	IPO RUPS Cum dividend	BEBS BEKS; BBTN XCIS

Source: NHKSI Research

# INNI Index's Stocks List

	Last Price	End of Last Year Price	Target Price*	Rating	Upside Potential (%)	1 Year Change (%)	Market Cap (IDR tn)	Price / EPS (TTM)	Price / BVPS	Return on Equity (%)	Dividend Yield TTM (%)	Sales Growth Yoy (%)	EPS Growth Yoy (%)	Adj. Beta
<b>Finance</b>						17.6	2,853.5							
BBCA	34,000	33,850	38,000	Overweight	11.8	5.7	838.3	30.9x	4.5x	15.1	1.6	1.7	(5.1)	1.1
BBRI	4,770	4,170	5,100	Overweight	6.9	14.9	588.3	31.3x	3.0x	9.2	3.5	(3.7)	(46.0)	1.3
BBNI	6,000	6,175	7,950	Buy	32.5	(12.1)	111.9	33.6x	1.0x	2.8	3.4	(2.9)	(78.7)	1.5
BMRI	6,475	6,325	7,000	Overweight	8.1	(14.8)	302.2	17.7x	1.6x	8.7	5.5	(2.3)	(37.7)	1.3
<b>Consumer</b>						(6.7)	996.9							
GGRM	36,600	41,000	49,000	Buy	33.9	(28.2)	70.4	7.6x	1.2x	17.9	N/A	2.0	(22.0)	0.9
ICBP	8,500	9,575	12,150	Buy	42.9	(22.4)	99.1	19.4x	3.7x	20.1	2.5	3.4	2.1	0.7
INDF	6,125	6,850	8,000	Buy	30.6	(14.9)	53.8	10.5x	1.4x	13.5	4.5	1.6	6.2	0.9
KLBF	1,555	1,480	1,750	Overweight	12.5	16.9	72.9	27.8x	4.3x	16.2	1.7	1.6	5.8	1.0
SIDO	790	805	930	Buy	17.7	25.4	23.7	25.2x	7.3x	29.7	3.3	8.7	15.6	0.7
MYOR	2,730	2,710	2,700	Hold	(1.1)	44.8	61.0	24.9x	5.8x	25.3	1.1	(2.1)	42.9	0.7
HMSP	1,445	1,505	1,750	Buy	21.1	(19.0)	168.1	16.0x	5.9x	34.4	8.3	(12.6)	(33.0)	1.0
UNVR	6,725	7,350	7,600	Overweight	13.0	(9.1)	256.6	35.8x	52.0x	140.2	2.9	0.1	(3.0)	0.8
<b>Infrastructure</b>						1.5	743.08							
TLKM	3,320	3,310	3,800	Overweight	14.5	(12.1)	328.9	17.4x	3.2x	18.8	4.6	(2.6)	1.3	1.1
ISAT	5,625	5,050	5,150	Underweight	(8.4)	151.1	30.6	N/A	2.6x	(5.8)	N/A	6.9	N/A	1.5
JSMR	4,050	4,630	5,100	Buy	25.9	(17.2)	29.4	34.1x	1.6x	4.7	0.4	(50.1)	(89.5)	1.3
EXCL	2,190	2,730	3,150	Buy	43.8	(11.7)	23.4	64.1x	1.2x	1.9	0.9	3.5	(47.8)	1.2
TOWR	1,175	960	1,310	Overweight	11.5	36.6	59.9	22.2x	6.1x	29.5	2.0	19.3	22.6	0.9
PGAS	1,400	1,655	1,400	Hold	-	(1.8)	33.9	N/A	0.9x	(0.3)	3.0	(23.5)	(58.7)	1.7
TBIG	2,070	1,630	1,565	Sell	(24.4)	86.5	46.9	45.2x	7.5x	20.0	1.4	13.5	22.3	0.8
<b>Trade</b>						26.3	769.3							
UNTR	21,800	26,600	19,000	Underweight	(12.8)	20.9	81.3	13.5x	1.3x	10.1	4.5	(28.5)	(47.0)	0.9
MAPI	850	790	870	Hold	2.4	4.9	14.1	N/A	2.7x	(5.6)	N/A	(34.0)	N/A	1.2
ACES	1,565	1,715	1,900	Buy	21.4	5.4	26.8	26.6x	5.5x	17.9	1.2	(8.3)	(26.7)	0.9
MIKA	2,720	2,730	2,810	Hold	3.3	11.9	38.8	52.4x	8.6x	16.7	0.8	(2.8)	0.0	0.2
<b>Property</b>						(9.7)	379.0							
CTRA	1,130	985	1,160	Hold	2.7	22.8	21.0	21.2x	1.4x	6.7	0.7	(8.9)	(40.9)	1.5
BSDE	1,205	1,225	1,575	Buy	30.7	9.5	25.5	25.4x	0.8x	3.3	N/A	(18.2)	(80.3)	1.4
WIKA	1,725	1,985	2,180	Buy	26.4	(5.7)	15.5	15.8x	1.1x	6.7	3.0	(43.3)	(96.3)	1.8
PTPP	1,535	1,865	1,940	Buy	26.4	32.3	9.5	23.1x	0.9x	3.4	2.2	(37.0)	(95.2)	1.8
PWON	565	510	615	Overweight	8.8	3.7	27.2	23.3x	1.9x	8.1	N/A	(41.9)	(72.1)	1.5
<b>Basic Ind.</b>						18.1	761.9							
SMGR	11,200	12,425	13,325	Buy	19.0	0.9	66.4	23.8x	1.9x	8.4	0.4	(12.9)	16.9	1.3
INTP	13,275	14,475	18,775	Buy	41.4	(11.5)	48.9	27.5x	2.2x	7.9	5.5	(10.6)	(5.0)	1.2
CPIN	6,350	6,525	6,675	Overweight	5.1	(2.3)	104.1	31.1x	4.7x	15.9	1.3	(1.4)	(10.9)	1.4
<b>Misc Ind.</b>						(4.2)	313.6							
ASII	5,500	6,025	5,800	Overweight	5.5	(9.1)	222.7	13.8x	1.4x	10.7	3.3	(26.2)	(25.6)	1.2
<b>Mining</b>						38.8	455.3							
PTBA	2,710	2,810	3,030	Overweight	11.8	10.2	31.2	11.4x	1.8x	16.0	12.0	(20.9)	(44.6)	1.1
INCO	5,150	5,100	4,530	Underweight	(12.0)	92.9	51.2	43.1x	1.8x	4.2	N/A	(2.2)	43.1	1.6
ANTM	2,420	1,935	1,480	Sell	(38.8)	284.1	58.2	124.2x	3.1x	2.4	0.1	(26.5)	30.3	1.8
ITMG	11,675	13,850	13,075	Overweight	12.0	7.1	13.2	22.6x	1.0x	4.5	7.5	(30.9)	(66.7)	1.2
ADRO	1,180	1,430	1,580	Buy	33.9	0.4	37.7	17.9x	0.7x	3.9	3.7	(26.7)	(63.7)	1.4
<b>Agriculture</b>						18.9	98.4							
AALI	10,850	12,325	13,175	Buy	21.4	9.0	20.9	25.1x	1.1x	4.5	0.8	7.8	294.6	1.3
LSIP	1,320	1,375	1,200	Underweight	(9.1)	25.7	9.0	12.9x	1.0x	7.8	1.1	(4.4)	175.7	1.5

# PT NH Korindo Sekuritas Indonesia

Member of Indonesia Stock Exchange

## Head of Research

### Anggaraksa Arismunandar

Market Strategy, Economy, Misc. Industry  
T +62 21 5088 9134 ext. 9134  
E anggaraksa@nhsec.co.id

## Senior Technical Analyst

### Dimas Wahyu Putra P

Technical  
T +62 21 5088 ext 9131  
E dimas.wahyu@nhsec.co.id

## Analyst

### Arief Machrus

Banking, Fixed Income  
T +62 21 5088 ext 9127  
E arief.machrus@nhsec.co.id

## Analyst

### Ajeng Kartika Hapsari

Property, Construction  
T +62 21 5088 ext 9130  
E ajeng@nhsec.co.id

## Analyst

### Maryoki Pasjri Alhusnah

Mining, Agriculture, Trade  
T +62 21 5088 ext 9128  
E meilki.darmawan@nhsec.co.id

## Analyst

### Putu Chantika Putri D

Consumer, Retail  
T +62 21 5088 ext 9129  
E putu.chantika@nhsec.co.id

## Analyst

### Restu Pamungkas

Telco, Tower, Toll road  
T +62 21 5088 ext 9133  
E restu.pamungkas@nhsec.co.id

## Research Support

### Jasmine Kusumawardani

T +62 21 5088 ext 9132  
E jasmine.kusumawardani@nhsec.co.id

## Head Office :

District 8 Treasury Tower 51st Fl.  
Unit A, SCBD Lot.28  
Jl. Jendral Sudirman Kav. 52-53 J  
akarta Selatan 12190  
Telp : +62 21 50889100  
Fax : +62 21 50889101

## Branch Office BSD:

ITC BSD Blok R No.48  
Jl. Pahlawan Seribu Serpong  
Tangerang Selatan 15322  
Indonesia  
Telp : +62 21 5316 2049  
Fax : +62 21 5316 1687

## Branch Office Medan:

Jl. Timor No. 147  
Medan  
Sumatera Utara 20234  
Indonesia  
Telp : +62 61 4156500  
Fax : +62 61 4568560

## Branch Office Semarang:

Jl. MH Thamrin No. 152  
Semarang  
Jawa Tengah 50314  
Indonesia  
Telp : +62 24 8446878  
Fax : +62 24 8446879

## DISCLAIMER

This report and any electronic access hereto are restricted and intended only for the clients and related entities of PT NH Korindo Sekuritas Indonesia. This report is only for information and recipient use. It is not reproduced, copied, or made available for others. Under no circumstances is it considered as a selling offer or solicitation of securities buying. Any recommendation contained herein may not be suitable for all investors. Although the information hereof is obtained from reliable sources, its accuracy and completeness cannot be guaranteed. PT NH Korindo Sekuritas Indonesia, its affiliated companies, employees, and agents are held harmless from any responsibility and liability for claims, proceedings, action, losses, expenses, damages, or costs filed against or suffered by any person as a result of acting pursuant to the contents hereof. Neither is PT NH Korindo Sekuritas Indonesia, its affiliated companies, employees, nor agents are liable for errors, omissions, misstatements, negligence, inaccuracy contained herein.