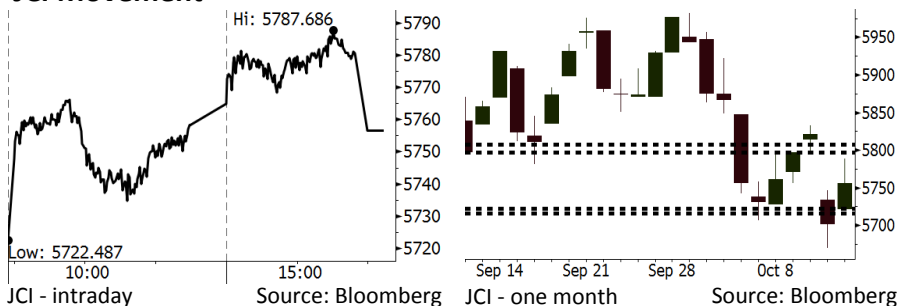


Morning Brief

Daily | Oct 15, 2018

JCI Movement



IHSG (Jakarta Composite Index)

October 12	5,756.49
Chg	+53.67pts (+0.94%)
Volume (bn shares)	77.52
Value (IDR tn)	7.42
Adv 247 Dec 153 Unc 225 Untr 107	

Foreign Transaction (IDR bn)

Buy	2,116
Sell	3,313
Net Buy (Sell)	(1,197)

Top Buy	NB Val.	Top Sell	NS Val.
TLKM	160.4	BBRI	74.5
PTBA	40.7	PGAS	65.8
BBCA	31.3	BMRI	54.0
TKIM	28.6	ASII	51.0
BBNI	9.8	SMCB	30.5

LQ-45 Index Top Gainers & Losers

Gainers	%	Losers	%
TLKM	3.1%	HMSF	-2.8%
BBNI	3.0%	LPKR	-2.0%
SCMA	2.6%	AKRA	-1.6%
BSDE	2.6%	PGAS	-0.9%
INTP	2.6%	INDY	-0.8%

Government Bond Yield & FX

	Last	Chg.
Tenor: 10 year	8.76%	0.06%
USDIDR	15,197	-0.25%
KRWIDR	13.42	0.68%

Global Indexes

Index	Last	Chg.	%
Dow Jones	25,339.99	287.16	1.15%
S&P 500	2,767.13	38.76	1.42%
Nasdaq	7,496.89	167.83	2.29%
FTSE 100	6,995.91	(11.02)	-0.16%
CAC 40	5,095.98	(10.39)	-0.20%
DAX	11,523.81	(15.54)	-0.13%
Nikkei	22,694.66	103.80	0.46%
Hang Seng	25,801.49	535.12	2.12%
Shanghai	2,606.91	23.46	0.91%
KOSPI	2,161.85	32.18	1.51%
EIDO	21.46	0.36	1.71%

Commodities

Commodity	Last	Chg.	%
Gold (USD /troy oz.)	1,217.1	(7.0)	-0.58%
Crude Oil (USD /bbl)	71.34	0.37	0.52%
Coal Newcas(USD/ton)	107.35	(0.30)	-0.28%
Gas (USD /mmbtu)	3.16	(0.06)	-1.89%
Nickel LME (USD /MT)	12,655	(20.0)	-0.16%
Tin LME (USD /MT)	19,125	(150.0)	-0.78%
CPO (MYR/Ton)	2,193	22.0	1.01%

Market Recap

IHSG bergerak menguat pada Jumat lalu ditopang oleh saham perbankan. Pergerakan ini di tengah transaksi *net foreign sell* sebesar Rp1,2 triliun. **Top Gainers: Infrastructure (+2.06%), Finance (+1.69%), Misc. Industry (+1.63%)**

Di tengah kekhawatiran investor akan tren kenaikan suku bunga dan potensi melambatnya pertumbuhan ekonomi global, bursa AS dan Asia berhasil ditutup naik pada Jumat lalu. Di sisi lain, bursa Eropa ditutup turun tipis seiring dengan munculnya isu-isu politik antara Uni Eropa dengan Italia dan Inggris.

Today's Outlook: Neraca Perdagangan September

Untuk hari ini kami mengestimasi IHSG bergerak menguat dengan **support range 5716-5722** dan **resistance range 5797-5807**. Pada hari ini pasar akan fokus mencermati rilis data neraca perdagangan September. Pada Agustus, Indonesia mengalami defisit perdagangan sebesar US\$1,0 miliar. Pada September, pasar memperkirakan defisit akan mengecil menjadi US\$444 juta. Ekspektasi ini didasarkan oleh pertumbuhan ekspor yang cenderung lebih baik dibandingkan Agustus. Di sisi lain, pertumbuhan impor September diperkirakan masih tinggi.

Di sisi lain tantangan datang dari pergerakan bursa regional Asia yang pagi ini bergerak melemah. Hal ini dipicu oleh pernyataan otoritas Tiongkok pada hari Minggu bahwa Tiongkok memiliki banyak instrumen dan ruang untuk beradaptasi terhadap dampak perang dagang.

Stocks Recommendation (details on the next page)

Trading Buy: BBNI, TLKM, INDF

Company News

- RALS : Mencatatkan Penjualan Rp6,68 Triliun
- TLKM : Telah Menambah 160.000 Km Serat Optik
- WIKA : Memperoleh Tender Pabrik KAN
- BYAN : Menargetkan Kapasitas Produksi 60 Juta Ton

Domestic & Global News

Neraca Perdagangan September 2018 Diproyeksikan Defisit US\$600 Juta
PBOC Miliki Instrumen Penangkal Dampak Perang Dagang

Indonesia Economic Data

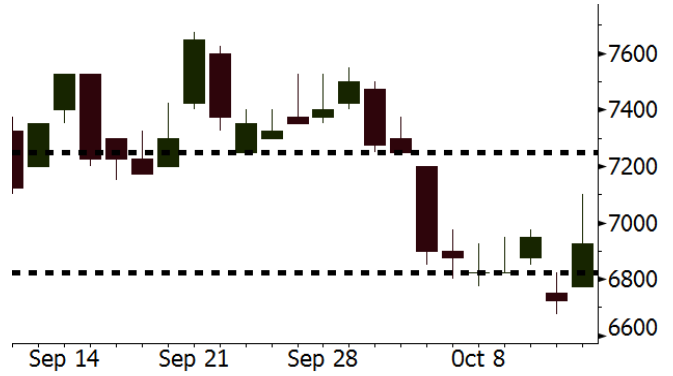
Monthly Indicator	Last	Prev.	Quarterly Indicator	Last	Prev.
BI 7 Day Rev Repo Rate	5.75%	5.50%	Real GDP	5.27%	5.06%
FX Reserve (USD bn)	114.85	117.90	Current Acc (USD bn)	(8.03)	(5.54)
Trd Balance (USD bn)	(1.02)	(2.03)	Govt. Spending Yoy	5.26%	2.73%
Exports Yoy	4.15%	19.33%	FDI (USD bn)	5.50	3.49
Imports Yoy	24.65%	31.56%	Business Confidence	112.82	106.28
Inflation Yoy	2.88%	3.20%	Cons. Confidence*	122.40	121.60

BBNI Last = 6925

Analysis BBNI akan merilis kinerja 3Q18 pada Kamis pekan ini. Pada 2Q18 BBNI mampu mencetak pertumbuhan laba sebesar 19%. Kami perkirakan pertumbuhan laba dua digit masih terjadi pada 3Q18.

Range 6825 – 7250

Action Trading Buy. Cut Loss If Below 6825



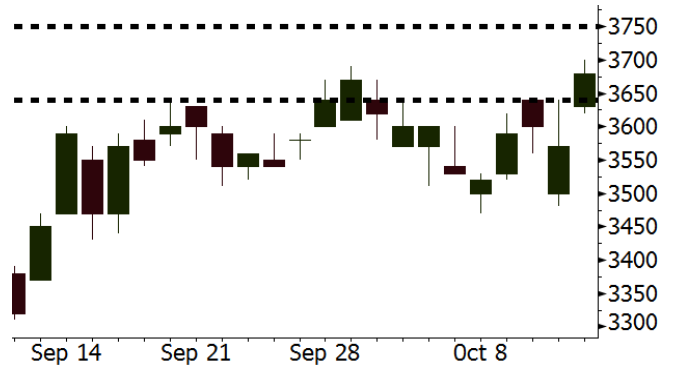
Source: Bloomberg

TLKM Last = 3680

Analysis Setelah mengalami kinerja yang buruk pada 2Q18, pasar memperkirakan bahwa kinerja TLKM pada 3Q18 akan membaik. Sales diperkirakan mencapai Rp33,9 triliun (vs Rp32,0 triliun pada 2Q18). EPS diperkirakan mencapai Rp54,24 (vs Rp29,9 pada 2Q18).

Range 3640 – 3830

Action Trading Buy. Cut Loss If Below 3640



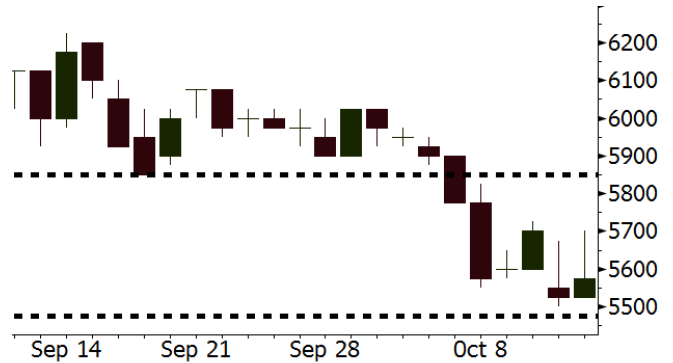
Source: Bloomberg

INDF Last = 5575

Analysis Berdasarkan konsensus, pada 3Q18 INDF diperkirakan mampu mencetak EPS sebesar 123,64. Angka ini melonjak tajam setelah realisasi yang buruk pada 2Q18 sebesar Rp87,4.

Range 5475 – 5850

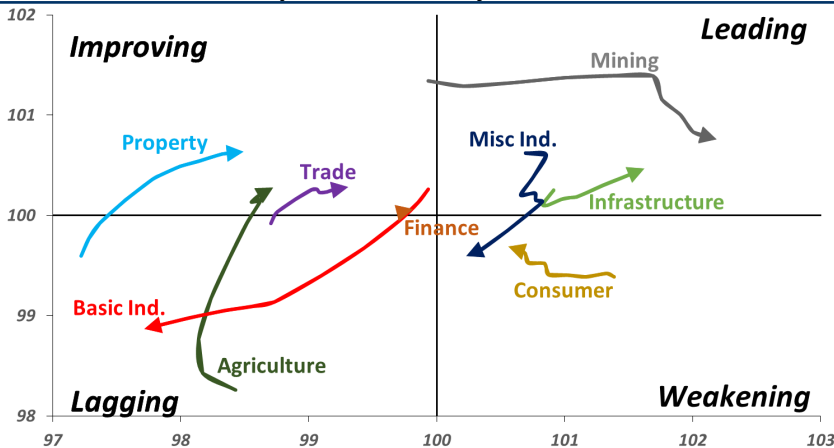
Action Trading buy. Cut Loss If Below 5475



Source: Bloomberg

Sector Rotation

Relative Rotation Graph - Last 10 Days



Source: Bloomberg

Relative Valuation

	Last Price	End of Last Year Price	Target Price*	Rating	Upside Potential (%)	1 Year Change (%)	Market Cap (IDR tn)	Price / EPS (TTM)	Price / BVPS	Return on Equity (%)	Dividend Yield TTM (%)	Sales Growth Yoy (%)	EPS Growth Yoy (%)	Adjusted Beta
JCI Index	5,756	6,356				(2.8)	6,522.5							
Finance						1.4	1,933.3							
BBCA	23,250	21,900	27,650	Buy	18.9	12.5	573.2	23.7x	4.2x	18.8	1.1	5.7	8.4	1.0
BBRI	2,950	3,640	3,930	Buy	33.2	(3.9)	363.9	11.8x	2.2x	19.3	3.6	5.8	10.9	1.4
BMRI	6,400	8,000	7,500	Buy	17.2	(5.5)	298.7	14.5x	1.8x	14.5	3.1	3.1	28.7	1.3
BBNI	6,925	9,900	9,675	Buy	39.7	(9.2)	129.1	8.8x	1.3x	15.5	3.7	11.8	16.2	1.4
BBTN	2,340	3,570	3,280	Buy	40.2	(23.3)	24.8	7.8x	1.1x	15.1	2.4	14.3	11.7	1.7
BJTM	640	710	810	Buy	26.6	(9.2)	9.6	8.1x	1.2x	15.5	6.9	1.1	2.5	0.9
Consumer						(2.4)	1,374.8							
HMSP	3,760	4,730	4,300	Hold	14.4	-	437.4	34.4x	15.8x	46.0	2.9	5.5	1.9	1.3
GGRM	74,275	83,800	88,650	Buy	19.4	15.7	142.9	17.5x	3.5x	20.9	3.5	12.6	13.7	1.2
UNVR	44,300	55,900	49,600	Hold	12.0	(10.1)	338.0	48.9x	67.4x	139.4	2.1	(0.4)	(2.5)	1.1
ICBP	8,725	8,900	10,550	Buy	20.9	(1.1)	101.8	25.5x	5.2x	21.3	1.9	5.4	9.5	1.1
INDF	5,575	7,625	8,175	Buy	46.6	(33.0)	49.0	12.7x	1.6x	12.6	4.3	1.0	(12.5)	1.2
KLBF	1,270	1,690	1,730	Buy	36.2	(25.3)	59.5	24.8x	4.5x	18.9	2.0	3.1	(0.0)	1.3
KAEF	2,500	2,700	3,280	Buy	31.2	(10.4)	13.9	39.3x	5.5x	14.9	0.7	29.1	28.3	1.0
Infrastructure						(12.7)	704.88							
TLKM	3,680	4,399	4,700	Buy	27.7	(16.2)	364.5	19.5x	4.2x	22.1	4.6	0.5	(28.1)	0.8
EXCL	2,770	2,960	3,800	Buy	37.2	(21.5)	29.6	203.3x	1.4x	0.7	N/A	1.0	N/A	1.2
ISAT	2,750	4,800	6,750	Buy	145.5	(55.6)	14.9	N/A	1.2x	(2.6)	2.7	(26.8)	N/A	0.9
PGAS	2,120	1,750	2,600	Buy	22.6	29.3	51.4	14.2x	1.0x	7.6	1.5	15.0	200.0	1.4
JSMR	4,360	6,400	6,050	Buy	38.8	(28.2)	31.6	14.2x	2.0x	14.8	1.4	42.5	2.9	0.9
TBIG	5,000	6,425	6,050	Buy	21.0	(21.3)	22.7	10.1x	7.5x	104.6	3.4	7.1	8.1	0.6
INDY	2,650	3,060	5,000	Buy	88.7	18.8	13.8	2.5x	0.9x	44.8	4.1	219.4	49.0	0.8
Trade						(13.8)	691.5							
UNTR	31,675	35,400	44,750	Buy	41.3	(7.5)	118.2	12.5x	2.4x	20.6	3.1	32.3	60.0	1.1
AKRA	3,740	6,350	4,650	Buy	24.3	(48.2)	15.0	21.4x	1.8x	22.2	5.9	21.6	(34.8)	1.2
SCMA	1,775	2,480	2,500	Buy	40.8	(18.2)	26.0	19.4x	6.1x	32.5	4.2	2.6	0.7	1.2
MNCN	755	1,285	1,125	Buy	49.0	(48.8)	10.8	7.5x	1.0x	14.6	2.0	1.8	(9.2)	1.1
LPPF	5,975	10,000	9,270	Buy	55.1	(36.4)	17.4	9.1x	7.5x	93.0	7.7	3.1	0.4	1.1
ACES	1,390	1,155	1,635	Buy	17.6	7.3	23.8	27.0x	6.7x	26.3	1.6	22.6	30.0	1.1
RALS	1,190	1,200	1,525	Buy	28.2	27.3	8.4	15.3x	2.2x	14.6	3.4	0.9	31.8	0.9
MAPI	790	620	945	Buy	19.6	15.3	13.1	22.4x	2.9x	15.5	0.5	18.0	183.0	1.0
Property						(18.3)	349.0							
BSDE	990	1,700	1,850	Buy	86.9	(43.4)	19.1	5.7x	0.7x	13.8	N/A	(27.6)	(79.9)	1.4
PWON	440	685	625	Buy	42.0	(26.7)	21.2	10.1x	1.9x	20.5	1.4	14.4	25.4	1.1
CTRA	805	1,185	1,050	Buy	30.4	(30.6)	14.9	20.5x	1.1x	5.6	1.2	(0.8)	(49.0)	1.5
SMRA	595	945	1,050	Buy	76.5	(41.1)	8.6	21.8x	1.3x	6.1	0.8	(1.2)	29.6	1.6
WSKT	1,615	2,210	2,810	Buy	74.0	(13.4)	21.9	3.8x	1.3x	39.6	3.5	47.3	134.6	1.4
PTPP	1,600	2,640	3,850	Buy	140.6	(41.2)	9.9	7.3x	0.9x	12.5	2.9	17.0	(16.3)	1.3
WIKA	1,290	1,550	2,150	Buy	66.7	(26.7)	11.6	9.0x	0.9x	10.5	2.1	36.8	18.7	1.0
ADHI	1,290	1,885	2,160	Buy	67.4	(37.7)	4.6	7.7x	0.8x	10.5	2.2	#N/A	N/A	1.1
Misc Ind.						(15.9)	352.2							
ASII	6,850	8,300	9,300	Buy	35.8	(19.2)	277.3	13.9x	2.2x	16.3	2.8	14.8	11.3	1.2
Basic Ind.						19.9	585.1							
INTP	16,900	21,950	21,575	Buy	27.7	(12.3)	62.2	47.4x	2.8x	5.7	4.1	(0.9)	(60.6)	1.5
SMGR	8,900	9,900	11,550	Buy	29.8	(18.0)	52.8	27.9x	1.8x	6.6	1.5	4.7	(10.9)	1.2
CPIN	4,990	3,000	4,200	Sell	(15.8)	59.9	81.8	24.0x	4.8x	21.3	1.1	2.7	59.1	1.0
JPFA	1,920	1,300	2,000	Hold	4.2	42.2	22.5	13.6x	2.5x	18.3	5.2	18.2	142.5	0.8
MAIN	1,145	740	780	Sell	(31.9)	31.6	2.6	17.8x	1.4x	7.9	N/A	13.5	350.0	1.2
KRAS	390	424	500	Buy	28.2	(21.7)	7.5	N/A	0.3x	(2.3)	N/A	34.7	72.4	1.1
TPIA	4,540	6,000	6,275	Buy	38.2	(3.7)	81.0	20.5x	3.1x	17.8	1.4	7.6	(37.4)	0.8
BRPT	1,800	2,260	2,420	Buy	34.4	(7.5)	32.0	19.1x	1.8x	8.9	1.4	13.0	22.5	1.2
Mining						29.4	433.9							
ADRO	1,710	1,860	2,500	Buy	46.2	(10.0)	54.7	7.9x	1.0x	13.3	6.3	3.9	(12.1)	1.1
PTBA	4,560	2,460	5,375	Buy	17.9	105.9	52.5	9.0x	3.8x	43.4	7.0	17.4	49.1	1.0
ITMG	24,950	20,700	32,400	Buy	29.9	20.0	28.2	7.3x	2.0x	27.6	12.6	8.0	(10.0)	1.1
INCO	3,360	2,890	5,325	Buy	58.5	12.0	33.4	56.7x	1.2x	1.9	N/A	28.3	N/A	1.3
ANTM	795	625	1,200	Buy	50.9	23.3	19.1	19.6x	1.0x	5.3	0.3	292.4	N/A	1.2
TINS	695	775	1,240	Buy	78.4	(16.8)	5.2	9.8x	0.8x	8.8	3.4	1.8	13.1	1.0
ELSA	368	372	625	Buy	69.8	12.9	2.7	7.5x	0.9x	12.1	1.4	46.5	783.3	1.3
Agriculture						(13.1)	97.9							
AALI	11,575	13,150	16,925	Buy	46.2	(21.5)	22.3	12.7x	1.2x	9.7	3.7	8.9	(23.3)	0.6
LSIP	1,180	1,420	1,500	Buy	27.1	(18.3)	8.1	15.2x	1.0x	6.6	3.8	(28.5)	(47.6)	0.6

* Target Price for December 2018

Source: Bloomberg, NHKS Research

RALS : Mencatatkan Penjualan Rp6,68 Triliun

PT Ramayana Lestari Sentosa Tbk (RALS) telah mencatatkan penjualan sebesar Rp6,68 triliun (+4,5% y-y) dan SSSG sebesar 2,4% hingga September 2018. Adapun nilai tersebut setara dengan 81,34% dari target 2018 sebesar Rp8,2 triliun. Pada 4Q18, RALS juga akan mempertahankan pertumbuhan penjualan dengan menggencarkan promosi akhir tahun serta memperkecil gerai-gerai segmen barang swalayan. (Bisnis Indonesia)

WIKA : Memperoleh Tender Pabrik KAN

PT Wijaya Karya (Persero) Tbk bersama dengan SEDIN Engineering Co Ltd, telah memenangkan tender atas proyek pembangunan pabrik Kaltim Amonium Nitrat (KAN) dengan nilai kontrak sebesar Rp958 miliar. Untuk itu, WIKA akan melakukan *contract discussion agreement* serta penandatanganan kontrak yang ditargetkan pada akhir 2018. Pabrik ini berkapasitas produksi sebesar 75.000 metrik ton amonium nitrat serta 60.000 ton nitrit *acid*. (Kontan)

TLKM : Telah Menambah 160.000 Km Serat Optik

PT Telekomunikasi Indonesia (Persero) Tbk (TLKM) telah membangun *fiber optic backbone network* dengan panjang lebih dari 160.000 km. Hal ini bertujuan untuk menjamin pemerataan jaringan serta mempercepat pertumbuhan ekonomi digital. Selain itu, TLKM juga tengah membangun jaringan kabel laut dari Dumai hingga ke Eropa Barat (SEA-ME-WES) serta dari Manado hingga mencapai bagian timur AS (SEA-US). (Bisnis Indonesia)

BYAN : Menargetkan Kapasitas Produksi 60 Juta Ton

PT Bayan Resources Tbk (BYAN) menargetkan total kapasitas produksi batu bara di Tabang, Kalimantan Timur dapat mencapai 60 juta ton pada 2021. Untuk itu, BYAN menanggarkan dana sebesar US\$25 juta yang berasal dari kas internal. Adapun pada 3Q18, BYAN mencatatkan volume produksi sebesar 8 juta ton (+23% y-y) yang ditopang oleh rendahnya curah hujan serta mobilisasi peralatan tambahan. (Bisnis Indonesia)

Domestic & Global News

Neraca Perdagangan September 2018 Diproyeksikan Defisit US\$600 Juta

Neraca perdagangan Indonesia diperkirakan masih mengalami defisit pada September 2018. Namun setidaknya defisit perdagangan membaik dibandingkan Juli dan Agustus. Badan Pusat Statistik (BPS) dijadwalkan mengumumkan data perdagangan internasional pada hari ini. Konsensus pasar yang dihimpun CNBC Indonesia memperkirakan pertumbuhan ekspor pada September sebesar 7,44% y-y, impor tumbuh 25,85% y-y, dan neraca perdagangan defisit US\$600 juta. (CNBC Indonesia)

PBOC Miliki Instrumen Penangkal Dampak Perang Dagang

Gubernur Bank Sentral Tiongkok Yi Gang menyatakan bahwa Bank sentral Tiongkok masih memiliki banyak instrumen, yang dapat digunakan untuk menanggulangi dampak negatif perang dagang. Tiongkok sedang bersitegang ihwal dagang. Dua negara dengan perekonomian terbesar di dunia saling baku hantam tarif impor. Ketegangan ini membuat investor khawatir dan memperlambat pertumbuhan ekonomi global. (CNBC)

Global Economic Calendar

Date	Country	Hour Jakarta	Event	Period	Actual	Consensus	Previous
Monday	JPN	11:30	Industrial Production MoM	Aug F		--	0.70%
15 - Oct	USA	19:30	Retail Sales Advance MoM	Sep		0.70%	0.10%
Tuesday	CHN	08:30	PPI YoY	Sep		3.60%	4.10%
16 - Oct	CHN	08:30	CPI YoY	Sep		2.50%	2.30%
	UK	15:30	Jobless Claims Change	Sep		--	8.7k
	UK	15:30	ILO Unemployment Rate 3Mths	Aug		4.00%	4.00%
	GER	16:00	ZEW Survey Current Situation	Oct		75	76
	GER	16:00	ZEW Survey Expectations	Oct		-10.8	-10.6
	USA	20:15	Industrial Production MoM	Sep		0.30%	0.40%
Wednesday	UK	15:30	CPI MoM	Sep		0.30%	0.70%
17 - Oct	UK	15:30	CPI YoY	Sep		2.60%	2.70%
	EU	16:00	CPI YoY	Sep F		2.10%	2.00%
	EU	16:00	CPI MoM	Sep		0.50%	0.20%
	USA	19:30	Housing Starts	Sep		1218k	1282k
Thursday	USA	01:00	FOMC Meeting Minutes	26-Sep		--	--
18 - Oct	USA	19:30	Initial Jobless Claims	13-Oct		--	214k
Friday	JPN	06:30	Natl CPI YoY	Sep		1.30%	1.30%
19 - Oct	CHN	09:00	GDP YoY	3Q		6.60%	6.70%
	CHN	09:00	Industrial Production YoY	Sep		6.00%	6.10%
	USA	21:00	Existing Home Sales	Sep		5.31m	5.34m

Source: Bloomberg

Domestic Economic Calendar

Date	Hour Jakarta	Event	Period	Actual	Consensus	Prev.
Monday	11:00	Exports YoY	Sep		7.25%	4.15%
15 - Oct	11:00	Imports YoY	Sep		24.76%	24.65%
	11:00	Trade Balance	Sep		-\$444	-\$1021m

Source: Bloomberg

Corporate Calendar

Date	Event	Company
Monday	Rights Delisting Date	MAYA
15 - Oct		
Tuesday	Extraordinary Shareholder Meeting	GOLL, ISSP
16 - Oct	Rights Offering Date	IMJS (3 per 20)
Wednesday	Extraordinary Shareholder Meeting	ISAT
17 - Oct	Cum Dividend Date	MAIN (IDR16 per share)
Thursday	Extraordinary Shareholder Meeting	BNII, CITA
18 - Oct		
Friday	Rights Delisting Date	IBFN, RBMS
19 - Oct		

Source: Bloomberg

DISCLAIMER

This report and any electronic access hereto are restricted and intended only for the clients and related entities of PT NH Korindo Sekuritas Indonesia. This report is only for information and recipient use. It is not reproduced, copied, or made available for others. Under no circumstances is it considered as a selling offer or solicitation of securities buying. Any recommendation contained herein may not suitable for all investors. Although the information hereof is obtained from reliable sources, its accuracy and completeness cannot be guaranteed. PT NH Korindo Sekuritas Indonesia, its affiliated companies, employees, and agents are held harmless from any responsibility and liability for claims, proceedings, action, losses, expenses, damages, or costs filed against or suffered by any person as a result of acting pursuant to the contents hereof. Neither is PT NH Korindo Sekuritas Indonesia, its affiliated companies, employees, nor agents are liable for errors, omissions, misstatements, negligence, inaccuracy contained herein.

All rights reserved by PT NH Korindo Sekuritas Indonesia



PT. NH Korindo Sekuritas Indonesia

Member of Indonesia Stock Exchange

Head Office :

Wisma Korindo 7th Floor
Jl. M.T. Haryono Kav. 62
Pancoran, Jakarta 12780
Indonesia
Telp: +62 21 7976202
Fax : +62 21 7976206

Branch Office BSD:

ITC BSD Blok R No.48
Jl. Pahlawan Seribu Serpong
Tangerang Selatan 15322
Indonesia
Telp : +62 21 5316 2049
Fax : +62 21 5316 1687

Branch Office Solo :

Jl. Ronggowarsito No. 8
Kota Surakarta
Jawa Tengah 57111
Indonesia
Telp: +62 271 664763
Fax : +62 271 661623

A Member of NH Investment & Securities Global Network

Seoul | New York | Hong Kong | Singapore | Shanghai | Beijing | Hanoi |
Jakarta